

# THE STOCKTAKE

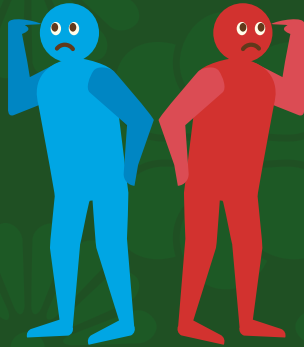
## 2016 ASIAN SUMMARY

New Zealand's diverse Asian child and youth population is the fastest growing population out of the four ethnic groups. Immigration processes can lead to greater mental health needs than the general population.

**35% GROWTH**

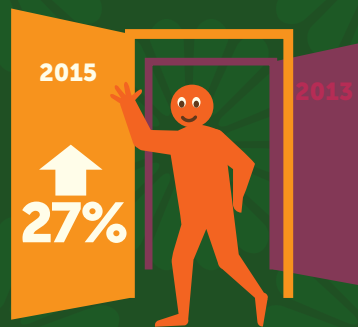
**Projected for 2026**

### What we know



- More likely to report barriers to healthcare access: Don't know how
- Early intervention & access to services are essential
- Significant improvements in emotional related symptoms at service discharge

### What we found



- 27% increase in access (2013-2015)
- Make up 3% of total clients
- Majority (87%) access DHB services
- Lowest access rate 0.75% below the 3% recommended rate

### What we need to do



- Intervene early via online e-therapies
- Promote mental health & raise awareness of services
- Reduce barriers to mental health services
- Provide educational resources & interpreter service

CLIENT ACCESS

ICAMH/AOD WORKFORCE



- Variety of Asian ethnicities difficult to match clinicians to clients
- Workforce not a priority in some services
- Limited funding for service development



- Make up 5% of the workforce
- 36% increase in clinical roles
- Majority (84%) are in clinical roles in DHB services as Mental Health Nurses & Psychiatrists



- Work innovatively i.e. upskilling interpreters & using Asian consultation teams
- Increase workforce clinical & cultural competencies (e.g. CALD training)
- Work collaboratively to share resources

For the full Stocktake report, visit  
[www.werryworkforce.org](http://www.werryworkforce.org)



Werry Workforce  
**WHĀRAURAU**  
For Infant, Child and Adolescent Mental Health